

Littleton Opera House Technical Specifications 2018

Littleton Opera House Performance Venue

Technical Specification

01/2018

Building:

*The Littleton Opera House was constructed in 1894, designed by architect Fred T. Austin. The Opera House opened in 1895 and it has a seating capacity of 430. It has also been known as the Grand Opera House and Town Hall. It was used for dramatic performances, musical comedy, vaudeville, opera, minstrel shows and wrestling. The Opera House has hosted an assortment of noted guests, including Bette Davis, and Ted Kennedy.

In later years it has hosted a wide array of performances, concerts, & community events. The Grand Hall is a prime venue rental for many occasions. We offer rentals for private parties, concerts, theatre, weddings, workshops, etc. We also offer a meeting space in our 3rd floor "Tower Room" conference center. The Littleton Opera House anchors one end of Littleton's Historic Main Street. It is a large white building with an octagonal clock tower on one corner. A large section of the building is devoted to the performance venue. The Littleton Area Historical Society & Museum, as well as the Opera House Management Office are located within the building. Future plans involve the creation of office suites on the 3rd floor.

Stage:

*Stage: 14'x32' masked to 11.5'x22. Apron 5'x22 oval with footlights (not operable and covered over with plywood), no crossover or door on stage right backstage.

*Proscenium Arch at plaster line is 18' high x 22' wide.

*Curtains: The main curtain was added in Sept 2013 and is maroon. The curtain measures 12' high x 20' wide open. The valance bottom is at 11' and runs to the top of fly space at 20'. Masking curtains are at 11' above floor and 22' wide with the old existing gold legs and border, the back drop are the same gold curtains that cover the back of the stage.

*Fly Space: 11' above stage to 20' top at ceiling, 2 x12 collar ties at 16" on center for attaching as well as 4 beams that run upstage to down stage 2) at 8' 3" from center of stage on both sides, 2) at 11 feet from center of stage on both sides. The present battens are attached to the ceiling with a variety of rope and chain. Flying other things than curtains, masking and lights is not allowed.

*Wings: stage right is open 5'x10' area, stage left is crowded as it has the return duct for the air conditioning 30"x36" down stage, dimmer pack and electrics midstage, stage door upstage.

*Stage: the open area of the stage is 16.5' x 22' and it is 4' above the main floor with a 2" lip above the stage floor in front of the footlights. There is an 18" area on the oval part of the front of the stage with a covered footlight trench. The trench is covered with 3/4" plywood.

*Access is from a hallway on stage left back stage stairs, and from a roll-able set of stairs in the front of the house.

*Electrics:

-At midstage stage left: 4) 20 amp 1phs outlets, 1) 30 amp 1phs outlet (dryer plug), 1) 50 amp 1 phs outlet (range plug). 80 amp 3 phs switch attached to cam locks for dimmer pack. On stage right there is 4) 20 amp 1phs outlets.

-Under the venue service panel in hallway are 4) 20 amp 1 phs outlets.

-At midstage stage right: 4) 20 amp 1phs outlets.

-Footlight trench: 1) 20 amp 1 phs outlet on both sides of the trench. Not presently accessible.

-Front of the stage: 1) 20 amp 1 phs outlet on both sides of the stage on the wall.

Performance Lighting:

*There is a 12-channel dimmer pack The ETC Sensor SP1220A gives dimming to 22 circuits (working) Edison plugs at 20 amps per circuit. It is controlled by a 5 pin dmx, a 100' cable and a Leprecon 12 channel controller. There are some lighting instruments available. 12) ellipsoidal 750 watts: (4) 26 degrees 8) 36 degrees), 10 ellipsoidal 575 watts: 5) 26 degrees 5) 36 degree, 2 ellipsoidal: 1000 watts 36 degree, 8) 500 watt Fresnel lights and 15) 600-watt par 64 lights. 2 light bars above the house on each side, accessible from the balcony. 1 bar at the back of the house, 1 bar on each side of the house at mid-house, and 1 bar on each side at the front of the house all accessible from the balcony. 2 light bars above the stage accessible from a ladder. 1 light batten is at 2' upstage from plaster line, 1 light batten is at 8' from plaster line.

House Lighting:

*The house lighting is a mixture of chandeliers and sconces that are turned on and off in the stage access room. The only exception is the chandeliers under the balcony that have a couple of switches around the Main Room. There is no dimming or remote control of these lights.

Sound System:

*The present amp is a 4 channel Peavey XRD 680S with the ability to handle 2 speakers at the main floor level, 2 at the balcony level. There are 2) corded handheld mics and mic cords, 2) wireless handheld mics, 2) wireless lapel mic.

Seating & Tables:

*The capacity of the main floor is 264 seated, or 124 seated w/ tables, 150 fixed seats balcony.
*The dimensions of the main floor are 53 wide x 47 long. There are 250 chairs that are in the venue area for use on the main floor. There are 15- 5' (60") round tables, and 26- 6' rectangular banquet tables. The seats in the balcony are in good condition and are all functional seats. All the seating areas except the seats in the balcony are handicap accessible, the balcony is handicap accessible. There are additional tables for use. 6) 6 footers and 2) 8 footers, 1) card table, 1) small folding table, 1) 20"x30" stand table 6) 18" x 6' conference tables and a TV table. Total seating for Grand Hall is 414.

House Electric Service:

*There are several 20 amp 1phs Edison outlets are spread around the house. The panel for these outlets are in the janitor's closet near the restrooms on the main floor.

Loading:

*The stage access through the main entrance or front of the building doors, through the door in the back of house, across the main floor and up rolling stairs. The main entrance door (handicap ramp) with both doors open is 70" wide x 82" high with a diagonal distance of 107". The passage way from the main entrance door has an opening of 44" wide x 81" high with a diagonal distance of 90". The door at the front of the building with both doors open is 74" wide x 83" high with a diagonal distance of 116". The back of the house doors with both doors open are 66" wide x 86" high with a diagonal distance of 105". A 4 wheel hand truck and a cart are on site.

Dressing Rooms:

Two dressing rooms accessed through the main hallway or stage access room on stage left.

Dressing Rm 1 is 10' x 16'.

Dressing Room 2 is a 9' x 11' room (also a prep-kitchen))

Prep-Kitchen:

Also used as the 2nd dressing room is a 9' x 11' room equipped with a full size refrigerator, 6' counter space with a double sink, with arched faucet.

ADA compliant water fountain

Bottle filler and water fountain is located in the main floor (2nd floor) level hallway

Back of House:

*There is a hallway in the back of the house. Access to the house is from 3 doors in the hallway and 1 door on the house right side of the main floor. The balcony is accessed from stairways in this hallway or by the 2nd floor house right door to a hallway serviced by an elevator. There are restrooms on both levels.

There is limited space for ticket sales, and concessions. The Opera House Management makes every effort to accommodate these needs.

The Opera House makes every effort to provide space for sales, and concessions. There is a corkboard and some picture frames to announce upcoming events.

Storage:

*Storage is available under the stage, and in the 3rd floor area on the house right off the balcony.

Film, Projection or Video:

*There is a 14' wide projection screen that is behind the valance on the stage. It is a 9/16 screen and the bottom hangs about 40" above the floor of the stage. Arrangements can be made for a projector.

Rest Rooms:

*There are large restrooms on the 2nd Floor (Main Floor) 4) toilet stalls for women and 2) toilet stalls and 2) urinals for men.

Two Single (Unisex) toilet/restrooms on the 3rd Floor (Balcony level) that are accessed from the hallway. Toilets on both levels provide handicap access.

Tower Room Conference Center-3rd Floor

13' 0" x 13' 7" meeting room is accessible by elevator or stairs. Conference tables, and chairs are set up in room for use. 35 seated with tables 50 chairs pp

This space overlooks Littleton's Award winning downtown, and is perfect for board meetings, and also suitable for small private parties.

A large wall mounted Television can be used to connect to your laptop for presentations
We also offer a screen and projector for the Conference room

Area Information

Contacts:

*Emergency 911

*Opera House Manager Sue Pilotte 603-991-3207

*Opera House Management Office 603-575-5324

*Opera House Commissioner/Museum Curator Richard Alberini 603-444-6052

*Town of Littleton Building Facilities Coordinator Amos Bell (802) 274-3468

*Fire Dept. Non-Emergency 603-444-2137

*Littleton Police Non-Emergency 603-444-2422

*Littleton Regional Healthcare 603- 444- 9000

*Physical Address:

2 Union Street

Littleton, NH 03561

Driving Directions: *Littleton Opera House is at the junction of route 302 and 116.

At the traffic light Main Street/Cottage Street/Union Street. Go north on Route 302

(exit 41 from I-93) approximately ¾ of a mile to the traffic light. The Littleton Opera House will be on your right. The Littleton Opera House is the staple Littleton's Main Street.

Parking:

*There are 12 parking spaces within the Opera House parking lot including street parking. 1 handicap space near the main entrance. There are 2 dozen parking spaces within a 1 minute walk, located behind the Mascoma Savings Bank and on Union Street.

There are several dozen spaces within a 2-minute walk in the Littleton public parking (located off Pleasant Street) behind the JAX JR Cinema, and behind the Laundry Mat. Also across the bridge on Cottage Street, (near the Littleton Senior Center), and along Main Street.

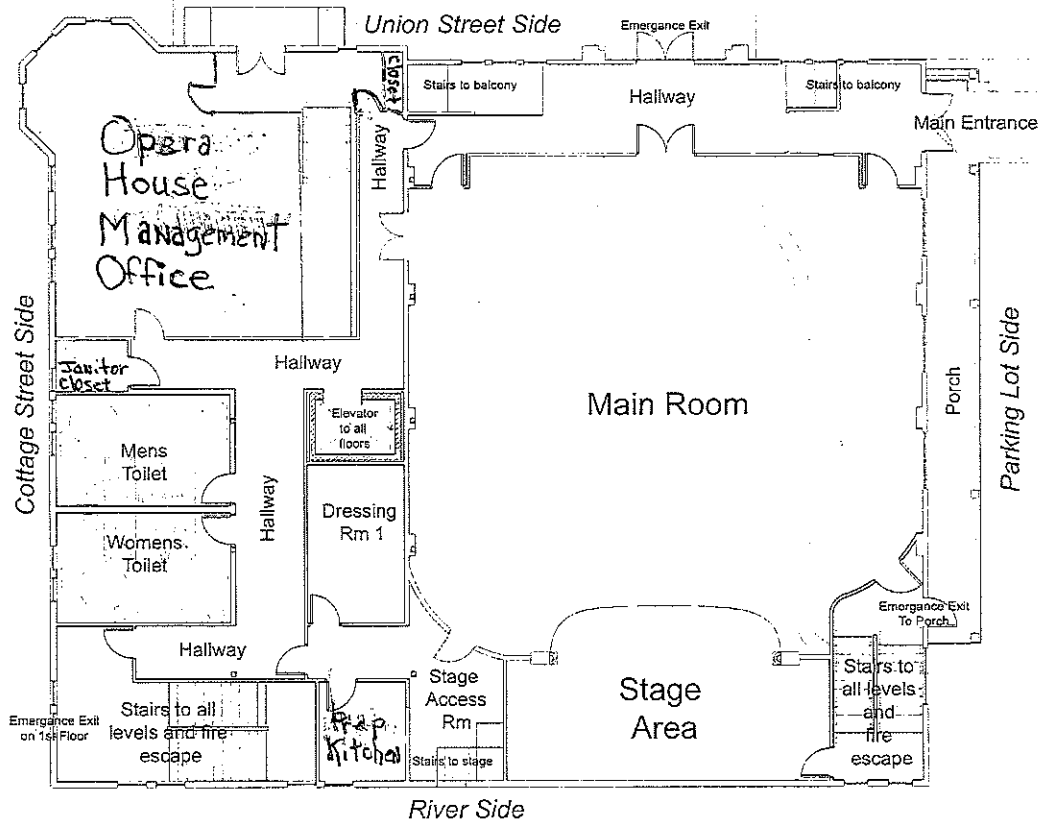
Food/Lodging:

Within a 5-minute walk there are 8 restaurants, 3 sandwich/pizza shops. Within a 5 minute drive there are 25 places to eat.

Within a 5-minute drive there 7 hotels, two of which are spring/summer/fall only.

The Littleton Opera House is less than a one minute walk to our downtown shops, restaurants, the River District Area, and walking path along the Ammonoosuc River with a covered bridge accessing the River District and Main Street

Littleton Opera House 2nd Floor (Main Floor)



Littleton Opera House 3rd Floor (Balcony Level)

